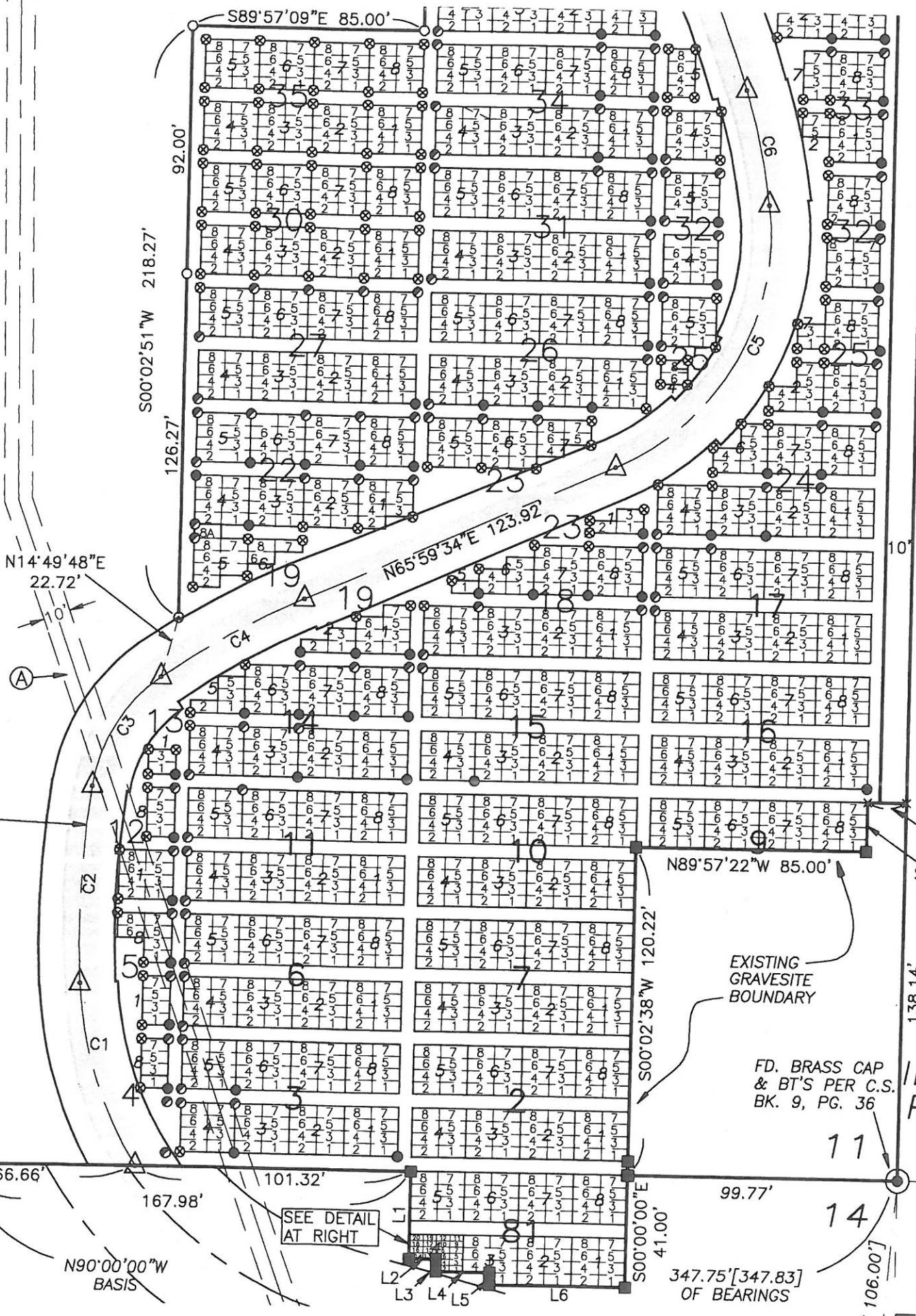


N00°41'44"W [N00°41'20"W]

EXTERIOR BOUNDARY THIRD ADDITION OF GRANITE HILL CEMETERY



STING  
VED  
AD  
INTERLINE  
CATION

1" IRON  
PE PER  
AT OF 3RD  
D. TO  
ANITE HILL  
METERY

N14°49'48"E  
22.72'

S00°02'51"W 218.27'

126.27'

92.00'

S89°57'09"E 85.00'

N65°59'34"E 123.92'

N89°57'22"W 85.00'

S00°02'38"W 120.22'

N90°00'00"W  
BASIS

SEE DETAIL  
AT RIGHT

EXISTING  
GRAVESITE  
BOUNDARY

FD. BRASS CAP  
& BT'S PER C.S.  
BK. 9, PG. 36

347.75'[347.83]  
OF BEARINGS

### 3RD ADDITON BLOCKS 81-35

451.26'

10'

138.14'

106.00'

11  
14

L2 L3 L4 L5 L6