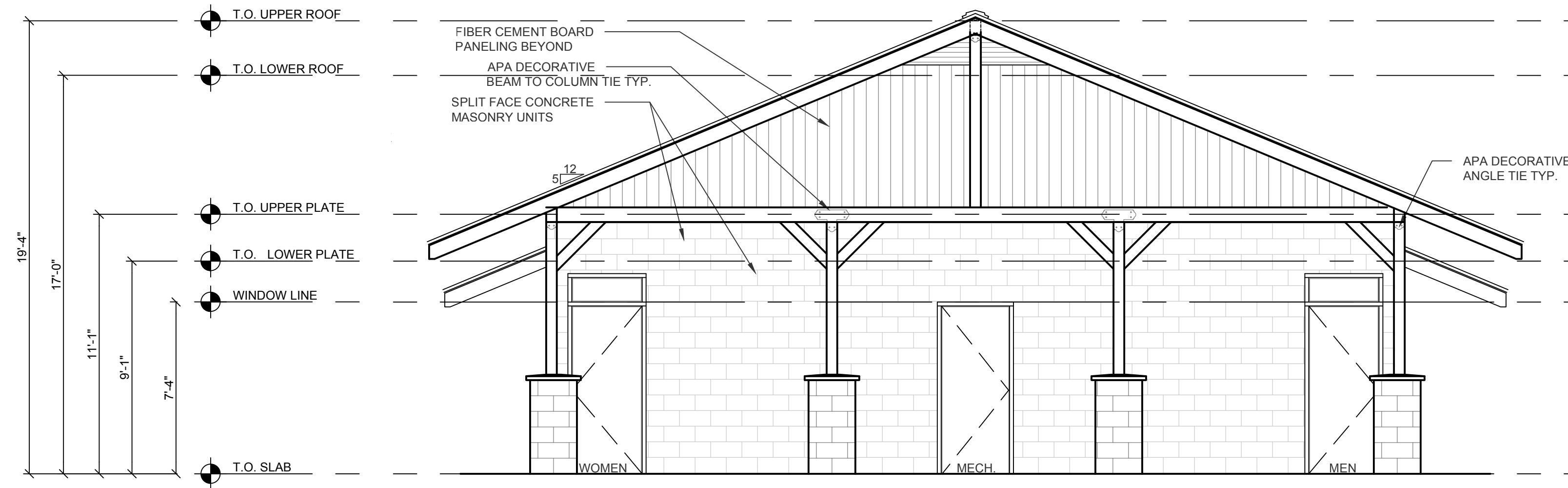
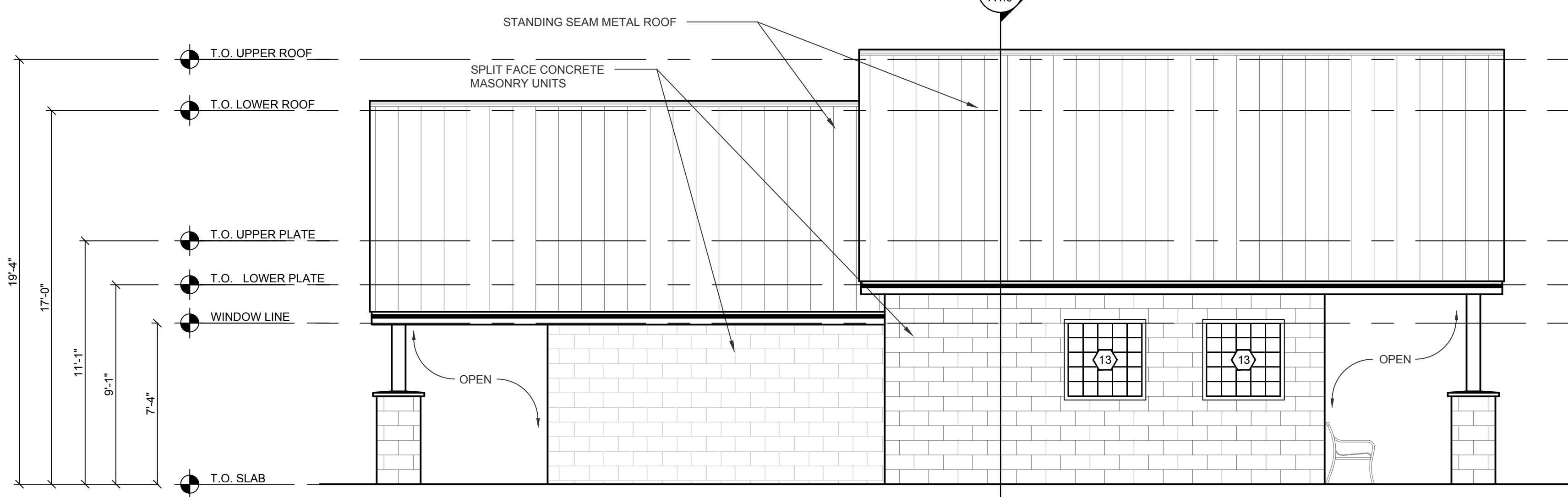


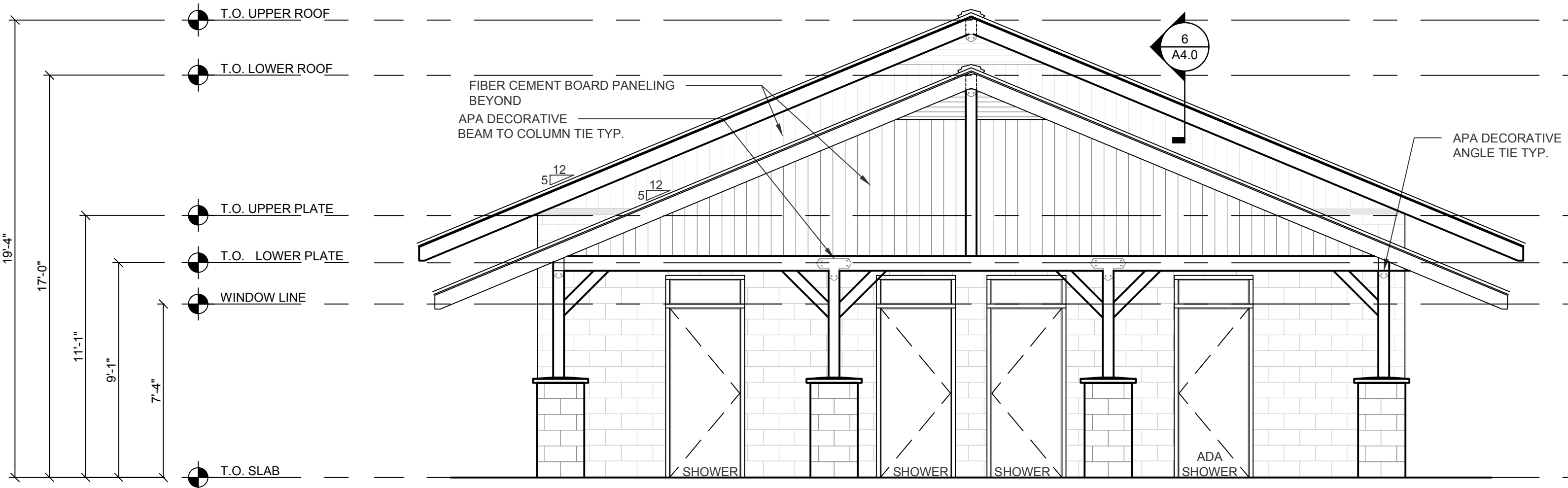
Drawing Name: V:\Projects - Current\16-0719 Whitehorse Park\2 Design\2.5 Design Phase\2.5 Design Phase\Working Drawings\Arch\WH-ARCH-ELEVS.dwg Last Save: May 16, 2017 10:51 AM Plot Date: May 16, 2017 10:53 AM By: Mick Hornbeck



1 RESTROOM ELEVATION
SCALE: 1/4" = 1'-0" (24x36)



2 SIDE ELEVATION
SCALE: 1/4" = 1'-0" (24x36)



3 RESTROOM ELEVATION
SCALE: 1/4" = 1'-0" (24x36)

KEYED NOTES

- 1 PROVIDE VERTICAL AND HORIZONTAL REINFORCEMENT FOR TOILET PARTITION AS REQUIRED IN WALL AND CEILING
- 2 NEW ELECTRIC SUB-PANEL
- 3 LIGHT FIXTURES - STYLE TO BE DETERMINED
- 4 EXHAUST FAN
- 5 CONDUIT THRU-WALL TO ATTIC WHERE REQUIRED
- 6 LIGHT ON TIMER WITH LIGHT SENSOR
- 7 PROVIDE POWER TO ALL HVAC EQUIPMENT
- 8 PROVIDE FIRE AND SMOKE ALARMS AS REQUIRED BY CODE
- 9 PROVIDE ELECTRIC TO HVAC UNITS IN ATTIC
- 10 PROVIDE ELECTRIC
- 11 SEALED CONCRETE FLOOR, SLOPE TO DRAIN
- 12 FRP w/ MOISTURE SEALED JOINTS IN SPECIFIED LOCATIONS TO EXTEND 48" MIN. AFF
- 13 VINYL WRAPPED GLASS BLOCK WINDOW. SEE WINDOW TYPE ON SHEET A5.0
- 14 INSTALL GARMENT/ BATH TOWEL HOOKS
- 15 MINIMUM 6" COVE TILE BASE
- 16 REFER TO ACCESSIBILITY GUIDELINES SHEET A1.0
- 17 QUEUING BENCH - MATERIALS/ FINISHES TBD

AUSLAND GROUP
www.AuslandGroup.com
Ashland 541.482.0923
Eugene 541.345.1094
Grants Pass 541.476.3788
Medford 541.773.3387

MILESTONE:
90% DESIGN DEVELOPMENT

ISSUE DATE: APRIL 28, 2017
PHASE: DESIGN PHASE
PROJECT # 16-0719

REV	DESCRIPTION

DRAWN BY: MH
DESIGNED BY: SP
CHECKED BY: SP
APPROVED BY: SP

**JOSEPHINE COUNTY PARKS
DEPARTMENT
WHITEHORSE PARK**
7613 Lower River Rd, Grants Pass, OR 97526

VERIFY SCALES
ORIGINAL DRAWING
BASE IS ONE INCH
IF NOT ONE INCH ON THE SHEET ADJUST SCALES ACCORDINGLY

REGISTERED ARCHITECT
SCOTT M. PIGMAN
ADVANCE
GRANTS PASS, OREGON
STATE OF OREGON

SHEET NUMBER
A2.0
FRONT AND SIDE ELEVATIONS