

Personnel



JOSEPHINE COUNTY, OREGON
Budget 2013-14
Table of Contents

Personnel Section

Name

Josephine County Organizational Chart..... P 1

Salaries from More than One Source..... P 2

Salaries & Fringe Benefit Percentages..... P 3

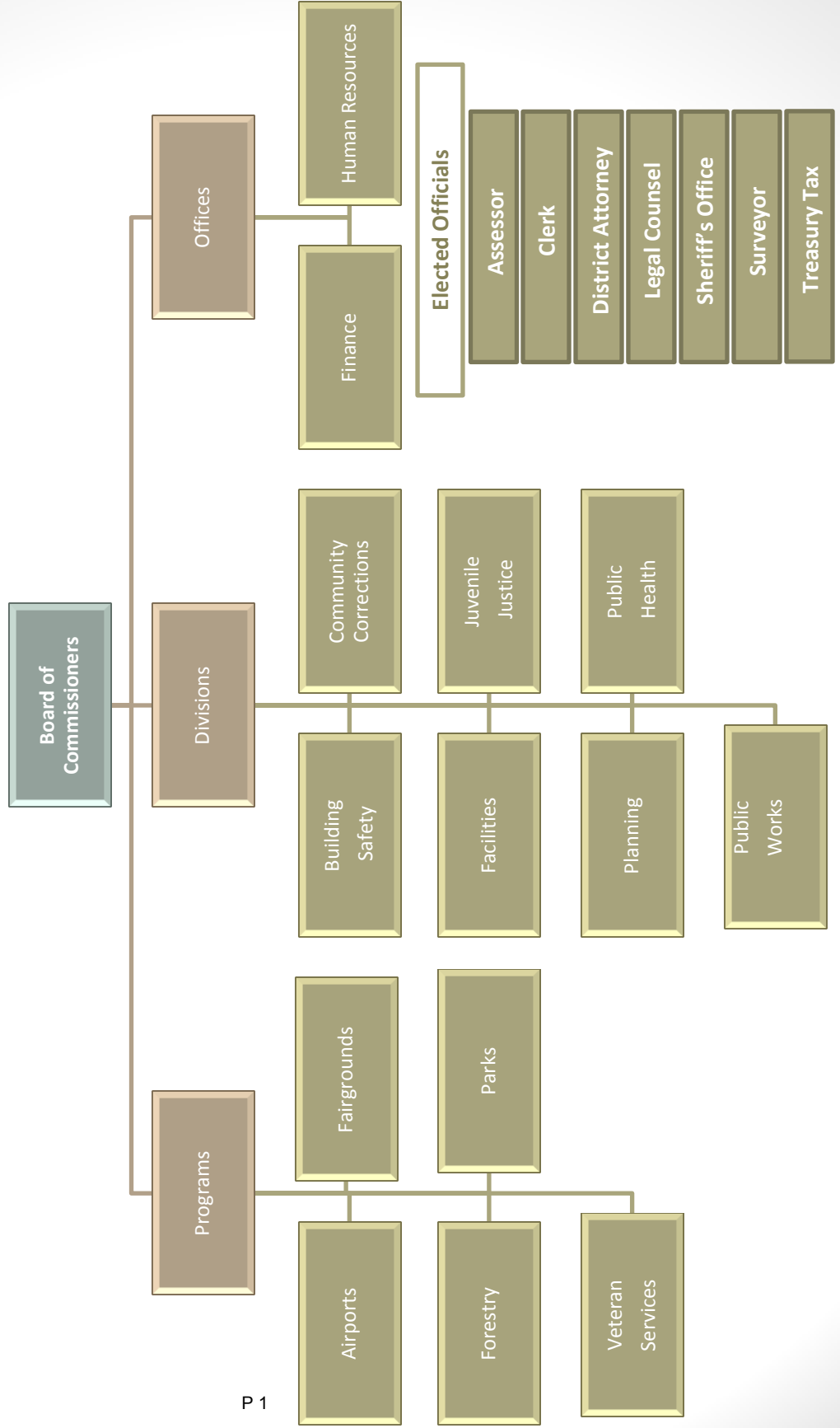
FTE Comparison of 11-12, 12-13, and 13-14 Budget P 4

County Budget Full Time Equivalents (FTE) – Multi - Year History P 5

County Budget Full Time Equivalents (FTE) – 2002-03 to Current GRAPH P 6

Salary Tables (Elected, Non-Union, AFSCME, SEIU, SHERIFF ASSOC, FOPPO) P 7

Josephine County Organizational Structure



JOSEPHINE COUNTY
SALARIES PAID FROM MORE THAN ONE SOURCE
2013-14

<u>Position Description</u>	<u>Number of Employees</u>	<u>Total Salary & Benefits</u>	<u>Detailed Salary & Benefits</u>		<u>Detailed Salary & Benefits</u>		
			<u>Fund #</u>	<u>Dept or Program</u>	<u>Amount</u>	<u>Amount</u>	
Surveyor	1	\$ 19,230	100	Surveyor	\$ 4,810	224 Corner Preservation	\$ 14,420
Sr Dept Specialist	1	\$ 65,490	100	Surveyor	\$ 39,300	224 Corner Preservation	\$ 26,190
Department Assistant	1	\$ 7,560	100	Surveyor	\$ 3,780	224 Corner Preservation	\$ 3,780
Surveyor Tech III	1	\$ 71,380	100	Surveyor	\$ 3,570	224 Corner Preservation	\$ 67,810
Property Data Analyst	1	\$ 69,230	100	Assessor	\$ 48,460	201 Public Works	\$ 20,770
Admin Secretary	1	\$ 63,830	100	Forestry	\$ 51,060	260 Parks	\$ 12,770
Fleet Manager	1	\$ 102,550	201	Public Works	\$ 76,900	402 County Fleet	\$ 25,650
Storeroom	1	\$ 64,870	201	Public Works	\$ 38,920	402 County Fleet	\$ 25,950
Deputy DA II	1	\$ 129,000	240	DA	\$ 96,760	248 DA Incentives	\$ 32,240

Source: Department Submitted Budgets for 2013-14

JOSEPHINE COUNTY
Salaries and Fringe Benefits Table
2013-14

	FTE	Salaries & Wages	Fringe Benefits	Total	Fringe Percentage of Total	Fringe Percentage of Salaries & Wages
Assessor	14.50	597,000	367,000	964,000	38.1%	61.5%
Treasurer	4.00	181,900	114,600	296,500	38.7%	63.0%
Clerk	5.00	224,100	140,700	364,800	38.6%	62.8%
Surveyor - Gen Fund	0.82	31,400	20,100	51,500	39.0%	64.0%
Surveyor - Public Land Corner Pres.	1.86	74,300	46,900	121,200	38.7%	63.1%
Planning	4.60	268,900	151,500	420,400	36.0%	56.3%
Forestry	8.80	388,900	259,900	648,800	40.1%	66.8%
Emergency Management	1.00	51,600	30,400	82,000	37.1%	58.9%
Public Works	51.65	2,433,000	1,693,400	4,126,400	41.0%	69.6%
Sheriff	37.80	2,328,500	1,665,900	3,994,400	41.7%	71.5%
DA	18.50	1,017,900	580,400	1,598,300	36.3%	57.0%
Juvenile Justice	7.50	412,000	247,600	659,600	37.5%	60.1%
Juvenile CAMI/Mediation	1.50	78,900	42,900	121,800	35.2%	54.4%
Community Corrections	24.00	1,416,500	949,400	2,365,900	40.1%	67.0%
Mental Health	2.00	86,600	55,300	141,900	39.0%	63.9%
Public Health	22.30	1,002,100	579,200	1,581,300	36.6%	57.8%
Commissioners	6.00	359,100	158,500	517,600	30.6%	44.1%
Finance	5.00	311,200	175,100	486,300	36.0%	56.3%
Human Resources	3.00	169,600	97,600	267,200	36.5%	57.5%
Property Management	-	-	-	-		
Information Technology	7.00	403,500	235,200	638,700	36.8%	58.3%
Communications	2.00	94,700	60,300	155,000	38.9%	63.7%
GIS	-	-	-	-		
Legal/Law Library	4.50	306,400	165,800	472,200	35.1%	54.1%
Building Operations/Maint	15.00	569,600	406,300	975,900	41.6%	71.3%
County Fleet	2.65	116,300	79,200	195,500	40.5%	68.1%
Veterans Service Office	2.25	85,400	47,500	132,900	35.7%	55.6%
Fairgrounds	2.30	79,100	44,300	123,400	35.9%	56.0%
Transit	15.00	444,500	292,100	736,600	39.7%	65.7%
CCF	-	-	-	-		
Parks	6.20	234,900	166,500	401,400	41.5%	70.9%
Building & Safety	4.50	270,200	154,100	424,300	36.3%	57.0%
Airports	2.50	114,200	57,300	171,500	33.4%	50.2%
Subtotal	283.73	14,152,300	9,085,000	23,237,300	39.1%	64.2%
Nondepartmental:						
Payroll Reserve Fund	-	190,000	120,000	310,000	38.7%	63.2%
Grand Totals	283.73	14,342,300	9,205,000	23,547,300	39.1%	64.2%

Source: Department Submitted Budgets for 2013-14

JOSEPHINE COUNTY
Comparison of FTE by Department
2012-13 to 2013-14

	Adopted 11-12	Adopted 12-13	Adopted 13-14	Change
	FTE	FTE	FTE	FTE
Assessor	17.80	14.85	14.50	(0.35)
Treasurer	5.00	4.50	4.00	(0.50)
Clerk	5.50	5.00	5.00	-
Surveyor	1.35	0.83	0.82	(0.01)
Surveyor Public Land Corner Pres.	2.37	2.13	1.86	(0.27)
Planning	6.00	5.00	4.60	(0.40)
Forestry	10.00	8.80	8.80	-
Emergency Management	-	1.00	1.00	-
Public Works	63.30	52.75	51.65	(1.10)
Sheriff	98.25	40.63	37.80	(2.83)
DA	23.50	18.00	18.50	0.50
Juvenile Justice	29.13	8.60	7.50	(1.10)
Juvenile CASA/CAMI	2.85	2.75	1.50	(1.25)
Community Corrections	28.00	27.00	24.00	(3.00)
Mental Health	3.95	2.45	2.00	(0.45)
Public Health	28.82	23.43	22.30	(1.13)
Commissioners	5.50	6.00	6.00	-
Finance	5.00	5.00	5.00	-
Human Resources	3.00	3.00	3.00	-
Property Management	0.60	0.60	-	(0.60)
Information Technology	8.00	7.00	7.00	-
Communications	2.00	2.00	2.00	-
GIS	1.00	0.50	-	(0.50)
Legal/Law Library	4.50	4.50	4.50	-
Building Operations/Maint	15.00	14.00	15.00	1.00
County Fleet	3.50	2.65	2.65	-
Veterans Service Office	2.25	2.25	2.25	-
Fairgrounds	4.60	4.00	2.30	(1.70)
Transit	17.00	15.80	15.00	(0.80)
CCF	1.55	1.55	-	(1.55)
Parks	6.00	6.00	6.20	0.20
Building & Safety	6.00	5.50	4.50	(1.00)
Airports	2.27	2.50	2.50	-
Grand Totals	<u>413.59</u>	<u>300.57</u>	<u>283.73</u>	<u>(16.84)</u>

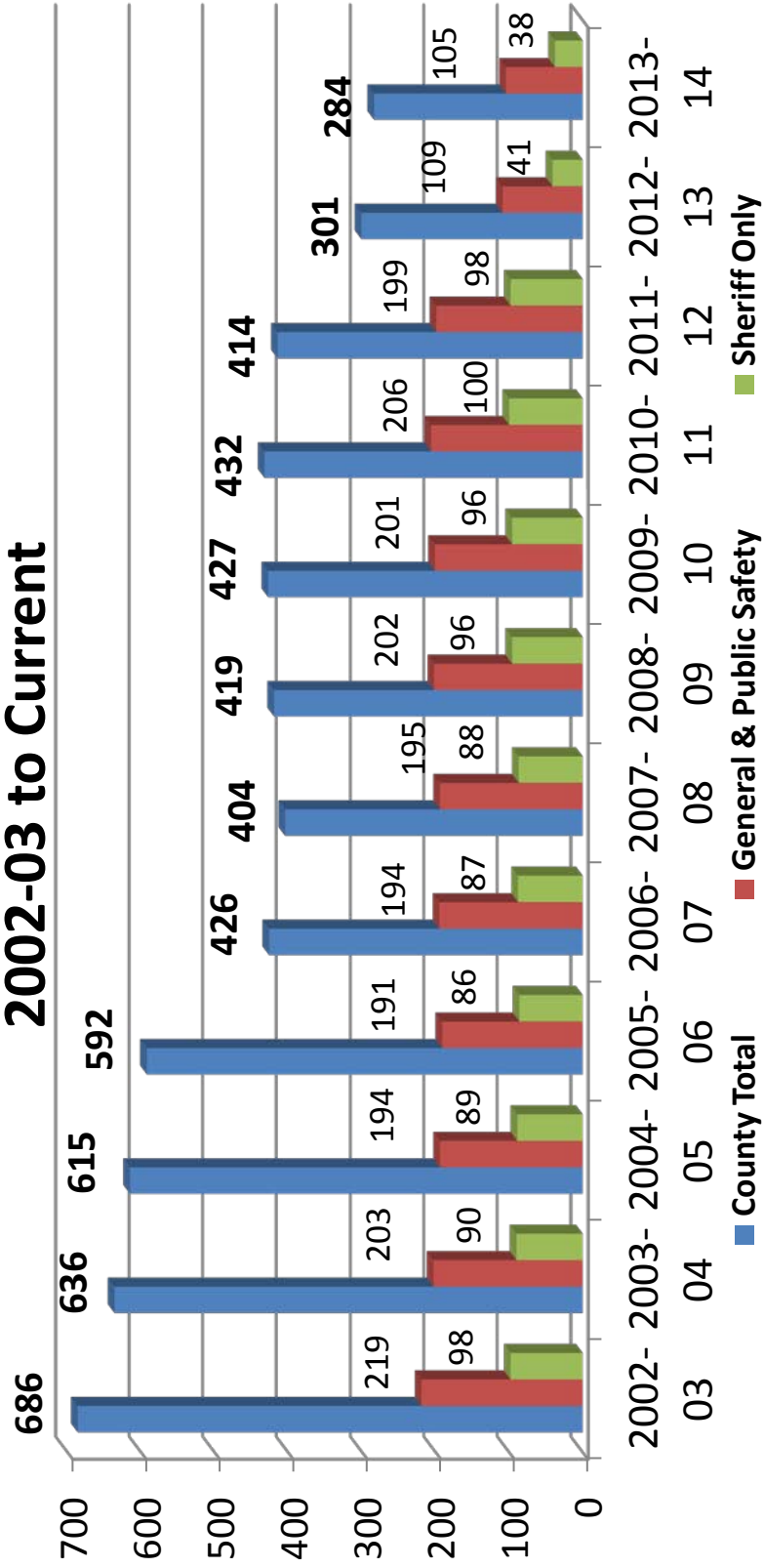
Source: Department Adopted/Submitted Budgets
(including supplemental changes)

Josephine County
Staffing Summary in Full Time Equivalent (FTE) Employees (including supplemental changes)

Department - Detail	2002-03	2003-04	2004-05	2005-06	2006-07	2007-08	2008-09	2009-10	2010-11	2011-12	2012-13	2013-14
General Fund:												
Assessor	19.00	18.00	18.00	18.00	18.00	18.00	18.00	18.00	18.00	17.80	14.85	14.50
Treasurer	7.00	6.75	6.45	6.00	6.35	5.60	5.60	5.25	5.00	5.00	4.50	4.00
Clerk	7.00	6.75	6.75	6.75	6.75	6.75	6.60	5.63	5.50	5.50	5.00	5.00
Surveyor	1.75	1.75	1.75	1.50	1.75	1.34	1.30	1.42	1.40	1.35	0.83	0.82
Planning	9.81	9.35	8.20	8.50	10.00	8.50	6.50	6.00	6.00	6.00	5.00	4.60
Veterans Service Office						1.75	1.80	1.75	2.25	2.25	2.25	2.25
Emergency Management											1.00	1.00
Forestry	7.10	7.00	6.50	6.50	6.50	10.50	10.50	10.00	10.00	10.00	8.80	8.80
Total General Fund:	51.66	49.60	47.65	47.25	49.35	52.44	50.30	48.05	48.15	47.90	42.23	40.97
Public Safety Fund:												
Sheriff	97.90	90.40	89.40	86.40	88.00	86.90	95.50	95.90	100.25	98.25	40.63	37.80
District Attorney	23.00	21.00	21.00	22.00	23.00	22.00	22.50	23.50	23.50	23.50	18.00	18.50
Juvenile Justice	46.64	42.24	35.66	35.31	34.95	32.25	33.75	33.10	33.70	29.13	8.60	7.50
Total Public Safety Fund:	167.54	153.64	146.06	143.71	145.95	141.15	151.75	152.50	157.45	150.88	67.23	63.80
Internal Services Fund:												
Commissioners	6.00	6.00	6.00	6.00	7.00	7.00	5.50	5.50	5.50	5.50	6.00	6.00
Finance	4.00	4.70	5.70	6.70	7.00	5.00	5.80	5.80	5.80	5.00	5.00	5.00
Human Resources	4.00	4.50	4.50	3.00	4.00	2.50	2.80	2.80	2.80	3.00	3.00	3.00
Property Management					1.00	1.00	1.50	1.50	1.50	0.60	0.60	-
Information Technology	10.00	9.50	9.00	8.00	9.00	7.00	7.00	8.00	8.00	8.00	7.00	7.00
Communications	3.00	3.00	3.00	3.00	3.00	3.00	3.00	3.00	3.00	2.00	2.00	2.00
GIS		2.15	2.30	2.30	2.00	1.50	1.00	2.00	2.00	1.00	0.50	-
Legal / Law Library	3.80	4.58	4.80	4.75	4.90	4.10	4.80	4.80	5.00	4.50	4.50	4.50
Total Internal Service:	30.80	34.43	35.30	33.75	37.90	31.10	31.40	33.40	33.60	29.60	28.60	27.50
Internal Vendors Fund:												
Building Oper/Maint	18.60	17.00	17.00	17.00	17.00	13.50	15.00	15.00	15.00	15.00	14.00	15.00
County Fleet	6.10	6.00	6.00	5.00	5.00	3.75	3.75	3.25	3.25	3.50	2.65	2.65
Total Internal Vendors:	24.70	23.00	23.00	22.00	22.00	17.25	18.75	18.25	18.25	18.50	16.65	17.65
Major Funds:												
Public Works	87.76	78.25	67.00	67.00	67.50	53.75	59.25	64.55	63.55	63.30	52.75	51.65
Community Corrections	35.24	28.61	38.94	35.94	35.19	34.25	33.50	33.25	32.25	28.00	27.00	24.00
Mental Health	181.33	180.82	161.24	152.83	1.30	1.95	1.40	0.80	1.85	3.95	2.45	2.00
Public Health	42.18	35.09	38.08	37.68	35.02	30.20	27.90	27.70	29.72	28.82	23.43	22.30
Total Major Funds:	346.51	322.77	305.26	293.45	139.01	120.15	122.05	126.30	127.37	124.07	105.63	99.95
Special Funds:												
Fairgrounds	5.50	5.00	5.00	5.00	4.00	4.00	6.10	6.10	6.40	4.60	4.00	2.30
Surveyor Pub. Land Corner				0.25	0.25	2.16	2.20	2.38	2.40	2.37	2.13	1.86
Transit	10.00	10.00	12.45	11.25		13.25	12.50	12.75	15.02	17.00	15.80	15.00
Juvenile CASA/CAMI	1.72	1.50	1.78	1.78	1.75	2.60	2.35	2.65	2.85	2.85	2.75	1.50
CCF	2.50	2.00	2.00	2.00	2.00	2.55	2.60	3.00	1.80	1.55	1.55	-
Parks	7.80	7.00	6.75	6.75	7.00	9.00	9.00	10.90	9.40	6.00	6.00	6.20
Building & Safety	6.75	6.75	8.75	7.00	8.00	6.50	8.50	8.50	8.00	6.00	5.50	4.50
Airports	3.25	3.50	2.50	1.00	1.00	1.75	1.50	1.75	1.75	2.27	2.50	2.50
Library	24.00	15.30	17.94	15.04	4.50							
Gen/Central Srvc/Econ Dev	2.75	1.45	0.45	1.45	3.00							
Total Special Funds:	64.27	52.50	57.62	51.52	31.50	41.81	44.75	48.03	47.62	42.64	40.23	33.86
Total FTE's	685.48	635.94	614.89	591.68	425.71	403.90	419.00	426.53	432.44	413.59	300.57	283.73

JOSEPHINE COUNTY BUDGETED FTE

2002-03 to Current



ELECTED & CONTRACT Salary Table

January 1, 2013

Monthly

Hourly

ELECTED OFFICIALS

NO COLA

E 03	Assessor	\$	5,991.86	\$	34.57
E 03	Clerk	\$	5,991.86	\$	34.57
E 04	Commissioners (3)	\$	6,282.65	\$	36.25
E 02	District Attorney	\$	1,763.29	\$	10.17 (excludes State Salary of \$90,972)
E 06	Legal Counsel	\$	7,857.02	\$	45.33
E 05	Sheriff	\$	7,030.01	\$	40.56
E 01	Surveyor	\$	640.00	\$	32.00 (Paid hourly rate for hours in excess of 20 per month)
E 03	Treasurer (Includes Tax Collector - 40%)	\$	5,991.86	\$	34.57

CONTRACT EMPLOYEES

C 06	Chief Financial Officer	\$	8,301.52	\$	47.89
------	-------------------------	----	----------	----	-------

NON UNION Salary Table
January 1, 2013

NO COLA

GRADE	STEP 1	STEP 2	STEP 3	STEP 4	STEP 5	STEP 6	STEP 7	STEP 8	STEP 9	STEP 10	STEP 11	STEP 12
NU1	1,952.36 11.26	2,069.50 11.94	2,121.24 12.24	2,174.27 12.54	2,228.63 12.86	2,284.35 13.18	2,341.46 13.51	2,400.00 13.85	2,460.00 14.19	2,521.50 14.55	2,584.54 14.91	2,649.15 15.28
NU2	2,049.98 11.83	2,172.98 12.54	2,227.30 12.85	2,282.98 13.17	2,340.05 13.50	2,398.55 13.84	2,458.51 14.18	2,519.97 14.54	2,582.97 14.90	2,647.54 15.27	2,713.73 15.66	2,781.57 16.05
NU3	2,152.48 12.42	2,281.63 13.16	2,338.67 13.49	2,397.14 13.83	2,457.07 14.18	2,518.50 14.53	2,581.46 14.89	2,646.00 15.27	2,712.15 15.65	2,779.95 16.04	2,849.45 16.44	2,920.69 16.85
NU4	2,260.10 13.04	2,395.71 13.82	2,455.60 14.17	2,516.99 14.52	2,579.91 14.88	2,644.41 15.26	2,710.52 15.64	2,778.28 16.03	2,847.74 16.43	2,918.93 16.84	2,991.90 17.26	3,066.70 17.69
NU5	2,373.11 13.69	2,515.50 14.51	2,578.39 14.88	2,642.85 15.25	2,708.92 15.63	2,776.64 16.02	2,846.06 16.42	2,917.21 16.83	2,990.14 17.25	3,064.89 17.68	3,141.51 18.12	3,220.05 18.58
NU6	2,491.77 14.38	2,641.28 15.24	2,707.31 15.62	2,774.99 16.01	2,844.36 16.41	2,915.47 16.82	2,988.36 17.24	3,063.07 17.67	3,139.65 18.11	3,218.14 18.57	3,298.59 19.03	3,381.05 19.51
NU7	2,616.36 15.09	2,773.34 16.00	2,842.67 16.40	2,913.74 16.81	2,986.58 17.23	3,061.24 17.66	3,137.77 18.10	3,216.21 18.56	3,296.62 19.02	3,379.04 19.49	3,463.52 19.98	3,550.11 20.48
NU8	2,747.18 15.85	2,912.01 16.80	2,984.81 17.22	3,059.43 17.65	3,135.92 18.09	3,214.32 18.54	3,294.68 19.01	3,377.05 19.48	3,461.48 19.97	3,548.02 20.47	3,636.72 20.98	3,727.64 21.51
NU9	2,884.54 16.64	3,057.61 17.64	3,134.05 18.08	3,212.40 18.53	3,292.71 19.00	3,375.03 19.47	3,459.41 19.96	3,545.90 20.46	3,634.55 20.97	3,725.41 21.49	3,818.55 22.03	3,914.01 22.58
NU10	3,028.77 17.47	3,210.50 18.52	3,290.76 18.99	3,373.03 19.46	3,457.36 19.95	3,543.79 20.45	3,632.38 20.96	3,723.19 21.48	3,816.27 22.02	3,911.68 22.57	4,009.47 23.13	4,109.71 23.71
NU11	3,180.21 18.35	3,371.02 19.45	3,455.30 19.93	3,541.68 20.43	3,630.22 20.94	3,720.98 21.47	3,814.00 22.00	3,909.35 22.55	4,007.08 23.12	4,107.26 23.70	4,209.94 24.29	4,315.19 24.90
NU12	3,339.22 19.27	3,539.57 20.42	3,628.06 20.93	3,718.76 21.45	3,811.73 21.99	3,907.02 22.54	4,004.70 23.10	4,104.82 23.68	4,207.44 24.27	4,312.63 24.88	4,420.45 25.50	4,530.96 26.14
NU13	3,506.18 20.23	3,716.55 21.44	3,809.46 21.98	3,904.70 22.53	4,002.32 23.09	4,102.38 23.67	4,204.94 24.26	4,310.06 24.87	4,417.81 25.49	4,528.26 26.13	4,641.47 26.78	4,757.51 27.45

NON UNION Salary Table
January 1, 2013

NO COLA

GRADE	STEP 1	STEP 2	STEP 3	STEP 4	STEP 5	STEP 6	STEP 7	STEP 8	STEP 9	STEP 10	STEP 11	STEP 12
NU14	3,681.49 21.24	3,902.38 22.51	3,999.94 23.08	4,099.94 23.65	4,202.44 24.25	4,307.50 24.85	4,415.19 25.47	4,525.57 26.11	4,638.71 26.76	4,754.68 27.43	4,873.55 28.12	4,995.39 28.82
NU15	3,865.56 22.30	4,097.49 23.64	4,199.93 24.23	4,304.93 24.84	4,412.55 25.46	4,522.86 26.09	4,635.93 26.75	4,751.83 27.41	4,870.63 28.10	4,992.40 28.80	5,117.21 29.52	5,245.14 30.26
NU16	4,058.84 23.42	4,302.37 24.82	4,409.93 25.44	4,520.18 26.08	4,633.18 26.73	4,749.01 27.40	4,867.74 28.08	4,989.43 28.79	5,114.17 29.51	5,242.02 30.24	5,373.07 31.00	5,507.40 31.77
NU17	4,261.78 24.59	4,517.49 26.06	4,630.43 26.71	4,746.19 27.38	4,864.84 28.07	4,986.46 28.77	5,111.12 29.49	5,238.90 30.23	5,369.87 30.98	5,504.12 31.76	5,641.72 32.55	5,782.76 33.36
NU18	4,474.87 25.82	4,743.36 27.37	4,861.94 28.05	4,983.49 28.75	5,108.08 29.47	5,235.78 30.21	5,366.67 30.96	5,500.84 31.74	5,638.36 32.53	5,779.32 33.34	5,923.80 34.18	6,071.90 35.03
NU19	4,698.61 27.11	4,980.53 28.73	5,105.04 29.45	5,232.67 30.19	5,363.49 30.94	5,497.58 31.72	5,635.02 32.51	5,775.90 33.32	5,920.30 34.16	6,068.31 35.01	6,220.02 35.89	6,375.52 36.78
NU20	4,933.54 28.46	5,229.55 30.17	5,360.29 30.93	5,494.30 31.70	5,631.66 32.49	5,772.45 33.30	5,916.76 34.14	6,064.68 34.99	6,216.30 35.86	6,371.71 36.76	6,531.00 37.68	6,694.28 38.62
NU21	5,180.22 29.89	5,491.03 31.68	5,628.31 32.47	5,769.02 33.28	5,913.25 34.12	6,061.08 34.97	6,212.61 35.84	6,367.93 36.74	6,527.13 37.66	6,690.31 38.60	6,857.57 39.56	7,029.01 40.55
NU22	5,439.23 31.38	5,765.58 33.26	5,909.72 34.10	6,057.46 34.95	6,208.90 35.82	6,364.12 36.72	6,523.22 37.63	6,686.30 38.58	6,853.46 39.54	7,024.80 40.53	7,200.42 41.54	7,380.43 42.58
NU23	5,711.19 32.95	6,053.86 34.93	6,205.21 35.80	6,360.34 36.70	6,519.35 37.61	6,682.33 38.55	6,849.39 39.52	7,020.62 40.50	7,196.14 41.52	7,376.04 42.55	7,560.44 43.62	7,749.45 44.71
NU24	5,996.75 34.60	6,356.56 36.67	6,515.47 37.59	6,678.36 38.53	6,845.32 39.49	7,016.45 40.48	7,191.86 41.49	7,371.66 42.53	7,555.95 43.59	7,744.85 44.68	7,938.47 45.80	8,136.93 46.94
NU25	6,296.59 36.33	6,674.39 38.51	6,841.25 39.47	7,012.28 40.46	7,187.59 41.47	7,367.28 42.50	7,551.46 43.57	7,740.25 44.66	7,933.76 45.77	8,132.10 46.92	8,335.40 48.09	8,543.79 49.29

AFSCME Salary Table
January 1, 2013

NO COLA

GRADE	STEP 1	STEP 2	STEP 3	STEP 4	STEP 5	STEP 6	STEP 7	STEP 8	STEP 9	STEP 10	STEP 11	STEP 12
A04	1,600.68 9.23	1,696.14 9.79	1,742.87 10.06	1,787.54 10.31	1,836.28 10.59	1,885.06 10.88	1,935.83 11.17	1,986.62 11.46	2,039.43 11.77	2,094.27 12.08	2,151.16 12.41	2,208.01 12.74
A05	1,694.10 9.77	1,795.67 10.36	1,844.43 10.64	1,893.19 10.92	1,943.96 11.22	1,994.73 11.51	2,047.55 11.81	2,102.39 12.13	2,159.28 12.46	2,216.15 12.79	2,275.05 13.13	2,336.00 13.48
A06	1,795.67 10.36	1,903.32 10.98	1,954.12 11.27	2,006.92 11.58	2,059.73 11.88	2,114.57 12.20	2,171.46 12.53	2,230.36 12.87	2,289.28 13.21	2,350.23 13.56	2,413.19 13.92	2,478.19 14.30
A07	1,903.32 10.98	2,017.09 11.64	2,071.93 11.95	2,126.77 12.27	2,183.65 12.60	2,240.53 12.93	2,299.44 13.27	2,360.36 13.62	2,423.35 13.98	2,488.35 14.36	2,555.37 14.74	2,622.40 15.13
A08	2,021.16 11.66	2,143.03 12.36	2,199.91 12.69	2,256.77 13.02	2,317.71 13.37	2,378.65 13.72	2,441.64 14.09	2,504.60 14.45	2,571.62 14.84	2,638.66 15.22	2,709.75 15.63	2,780.85 16.04
A09	2,136.93 12.33	2,264.91 13.07	2,325.85 13.42	2,386.78 13.77	2,451.78 14.15	2,516.78 14.52	2,583.81 14.91	2,652.88 15.31	2,723.97 15.72	2,797.11 16.14	2,870.23 16.56	2,947.42 17.00
A10	2,262.86 13.06	2,398.96 13.84	2,461.94 14.20	2,526.94 14.58	2,596.01 14.98	2,663.04 15.36	2,734.13 15.77	2,807.26 16.20	2,882.42 16.63	2,959.61 17.08	3,036.78 17.52	3,118.06 17.99
A11	2,396.93 13.83	2,541.15 14.66	2,608.20 15.05	2,677.24 15.45	2,748.34 15.86	2,821.47 16.28	2,896.63 16.71	2,971.79 17.15	3,051.02 17.60	3,132.26 18.07	3,215.56 18.55	3,300.86 19.04
A12	2,537.09 14.64	2,689.44 15.52	2,760.54 15.93	2,833.66 16.35	2,908.82 16.78	2,986.01 17.23	3,065.23 17.68	3,146.48 18.15	3,229.77 18.63	3,315.08 19.13	3,404.46 19.64	3,493.84 20.16
A13	2,681.31 15.47	2,841.77 16.40	2,916.95 16.83	2,996.17 17.29	3,075.40 17.74	3,156.64 18.21	3,241.95 18.70	3,327.27 19.20	3,416.65 19.71	3,508.06 20.24	3,601.50 20.78	3,696.98 21.33
A14	2,831.64 16.34	3,002.26 17.32	3,081.49 17.78	3,164.77 18.26	3,248.06 18.74	3,335.40 19.24	3,424.78 19.76	3,516.17 20.29	3,611.65 20.84	3,707.12 21.39	3,806.66 21.96	3,908.20 22.55
A15	2,990.07 17.25	3,168.84 18.28	3,254.14 18.77	3,341.49 19.28	3,430.87 19.79	3,522.28 20.32	3,615.71 20.86	3,713.23 21.42	3,812.75 22.00	3,914.31 22.58	4,017.91 23.18	4,125.57 23.80

AFSCME Salary Table
January 1, 2013

NO COLA

GRADE	STEP 1	STEP 2	STEP 3	STEP 4	STEP 5	STEP 6	STEP 7	STEP 8	STEP 9	STEP 10	STEP 11	STEP 12
A16	3,160.71 18.24	3,349.62 19.33	3,438.99 19.84	3,532.44 20.38	3,625.87 20.92	3,721.35 21.47	3,820.88 22.04	3,924.47 22.64	4,028.07 23.24	4,135.73 23.86	4,245.43 24.49	4,359.16 25.15
A17	3,337.43 19.25	3,538.53 20.42	3,631.96 20.95	3,729.47 21.52	3,829.00 22.09	3,930.55 22.68	4,036.18 23.29	4,143.85 23.91	4,253.55 24.54	4,367.29 25.20	4,483.09 25.86	4,602.93 26.56
A18	3,524.30 20.33	3,735.54 21.55	3,835.09 22.13	3,936.66 22.71	4,040.25 23.31	4,147.92 23.93	4,259.63 24.58	4,371.35 25.22	4,487.14 25.89	4,607.00 26.58	4,728.86 27.28	4,854.80 28.01
A19	3,719.31 21.46	3,942.75 22.75	4,046.35 23.34	4,154.01 23.97	4,265.73 24.61	4,379.49 25.27	4,495.28 25.93	4,615.11 26.63	4,737.00 27.33	4,862.93 28.06	4,992.93 28.81	5,124.96 29.57
A20	3,924.47 22.64	4,160.11 24.00	4,269.80 24.63	4,383.55 25.29	4,501.36 25.97	4,619.18 26.65	4,743.09 27.36	4,869.03 28.09	4,999.02 28.84	5,131.06 29.60	5,267.14 30.39	5,407.31 31.20
A21	4,137.76 23.87	4,385.57 25.30	4,503.38 25.98	4,623.24 26.67	4,745.12 27.38	4,871.04 28.10	5,001.06 28.85	5,135.13 29.63	5,271.22 30.41	5,411.37 31.22	5,555.61 32.05	5,703.89 32.91
A22	4,365.26 25.18	4,627.30 26.70	4,751.15 27.41	4,877.15 28.14	5,007.16 28.89	5,139.19 29.65	5,277.32 30.45	5,417.48 31.26	5,561.71 32.09	5,707.96 32.93	5,860.30 33.81	6,016.70 34.71
A23	4,604.95 26.57	4,881.22 28.16	5,011.21 28.91	5,145.27 29.68	5,281.39 30.47	5,423.56 31.29	5,567.79 32.12	5,716.07 32.98	5,868.42 33.86	6,024.83 34.76	6,185.30 35.69	6,349.84 36.63
A24	4,856.84 28.02	5,147.32 29.70	5,285.43 30.49	5,427.62 31.31	5,571.85 32.15	5,720.14 33.00	5,872.47 33.88	6,028.89 34.78	6,189.37 35.71	6,355.93 36.67	6,524.55 37.64	6,699.21 38.65
A25	5,057.94 29.18	5,360.61 30.93	5,504.82 31.76	5,651.08 32.60	5,801.38 33.47	5,955.76 34.36	6,114.20 35.27	6,276.71 36.21	6,445.32 37.19	6,615.95 38.17	6,792.66 39.19	6,973.45 40.23

SEIU Salary Table
January 1, 2013

NO COLA

ROADWORKERS

GRADE	STEP 1	STEP 2	STEP 3	STEP 4	STEP 5	STEP 6	STEP 7	STEP 8	STEP 9	STEP 10	STEP 11	STEP 12
O10	2,347.81 13.55	2,488.04 14.35	2,551.36 14.72	2,614.71 15.09	2,680.29 15.46	2,748.16 15.86	2,816.01 16.25	2,886.12 16.65	2,958.52 17.07	3,033.14 17.50	3,107.78 17.93	3,186.95 18.39
O20	2,594.13 14.97	2,750.73 15.87	2,818.80 16.26	2,891.43 16.68	2,964.07 17.10	3,041.24 17.55	3,118.39 17.99	3,197.84 18.45	3,279.54 18.92	3,361.24 19.39	3,447.47 19.89	3,534.90 20.39
O30	2,850.91 16.45	3,021.69 17.43	3,101.39 17.89	3,181.10 18.35	3,265.35 18.84	3,349.58 19.32	3,438.40 19.84	3,527.21 20.35	3,620.56 20.89	3,716.20 21.44	3,811.85 21.99	3,913.02 22.58
O40	3,114.19 17.97	3,301.56 19.05	3,388.36 19.55	3,477.47 20.06	3,566.57 20.58	3,660.26 21.12	3,756.23 21.67	3,856.75 22.25	3,957.28 22.83	4,060.10 23.42	4,167.49 24.04	4,277.15 24.68
O50	3,194.15 18.43	3,386.08 19.54	3,486.63 20.12	3,591.72 20.72	3,699.09 21.34	3,811.07 21.99	3,923.01 22.63	4,041.82 23.32	4,162.92 24.02	4,286.29 24.73	4,416.51 25.48	4,549.05 26.25
<u>FLEET</u>												
GRADE	STEP 1	STEP 2	STEP 3	STEP 4	STEP 5	STEP 6	STEP 7	STEP 8	STEP 9	STEP 10	STEP 11	STEP 12
O21	2,364.43 13.64	2,506.64 14.46	2,569.60 14.82	2,634.59 15.20	2,701.62 15.59	2,770.70 15.99	2,839.76 16.38	2,912.88 16.81	2,986.01 17.23	3,061.17 17.66	3,140.39 18.12	3,219.62 18.58
O31	2,652.88 15.31	2,811.32 16.22	2,884.44 16.64	2,961.65 17.09	3,038.84 17.53	3,118.06 17.99	3,199.29 18.46	3,282.58 18.94	3,367.91 19.43	3,455.24 19.93	3,546.65 20.46	3,638.06 20.99
O41	2,811.32 16.22	2,979.91 17.19	3,057.12 17.64	3,138.35 18.11	3,219.62 18.58	3,302.88 19.06	3,390.23 19.56	3,479.61 20.08	3,569.00 20.59	3,662.44 21.13	3,757.90 21.68	3,857.45 22.25
O51	2,992.11 17.26	3,170.85 18.29	3,268.36 18.86	3,365.86 19.42	3,467.43 20.00	3,573.07 20.61	3,680.72 21.24	3,792.44 21.88	3,906.18 22.54	4,024.00 23.22	4,145.89 23.92	4,269.80 24.63

SHERIFF ASSOCIATION Salary Table

January 1, 2013

NO COLA

GRADE	STEP 1	STEP 2	STEP 3	STEP 4	STEP 5	STEP 6	STEP 7
S 1	2,413.75 13.93	2,555.15 14.74	2,682.61 15.48	2,814.06 16.24	2,957.44 17.06	3,102.82 17.90	3,266.14 18.84
S 2	2,535.24 14.63	2,682.61 15.48	2,814.06 16.24	2,957.44 17.06	3,102.82 17.90	3,266.14 18.84	3,423.46 19.75
S 3	2,959.42 17.07	3,130.70 18.06	3,288.03 18.97	3,455.32 19.93	3,624.60 20.91	3,801.85 21.93	3,991.05 23.03
S 4	3,015.20 17.40	3,190.45 18.41	3,724.18 21.49	3,905.40 22.53	4,100.59 23.66	4,305.72 24.84	4,516.82 26.06
S 5	3,031.14 17.49	3,208.37 18.51	3,742.10 21.59	3,923.33 22.64	4,118.51 23.76	4,323.63 24.94	4,536.73 26.17
S 6	3,108.81 17.94	3,288.03 18.97	3,833.72 22.12	4,022.91 23.21	4,222.08 24.36	4,431.19 25.57	4,648.27 26.82
S 7	3,184.47 18.37	3,371.68 19.45	3,923.33 22.64	4,118.51 23.76	4,323.63 24.94	4,536.73 26.17	4,761.77 27.47
S 8	3,248.21 18.74	3,437.40 19.83	3,929.31 22.67	4,126.48 23.81	4,331.59 24.99	4,544.70 26.22	4,771.74 27.53
S 9	3,329.85 19.21	3,523.03 20.33	4,030.88 23.26	4,230.05 24.40	4,437.15 25.60	4,658.21 26.87	4,893.22 28.23
S 10	3,409.52 19.67	3,604.69 20.80	4,126.48 23.81	4,331.59 24.99	4,544.70 26.22	4,771.74 27.53	5,012.71 28.92
S 11	3,491.18 20.14	3,698.29 21.34	4,230.05 24.40	4,437.15 25.60	4,658.21 26.87	4,893.22 28.23	5,138.17 29.64
S 12	3,578.80 20.65	3,787.91 21.85	4,331.59 24.99	4,544.70 26.22	4,771.74 27.53	5,012.71 28.92	5,263.64 30.37

FOPPO Salary Table
January 1, 2013

1.7% COLA

GRADE	STEP 1	STEP 2	STEP 3	STEP 4	STEP 5	STEP 6	STEP 7	STEP 8
Basic PPO	\$3,538.94	\$3,732.30	\$3,941.26	\$4,138.52	\$4,312.34	\$4,503.75	\$4,691.25	\$4,882.64
F16	\$20.42	\$21.53	\$22.74	\$23.88	\$24.88	\$25.98	\$27.06	\$28.17
Int PPO	\$3,773.56	\$3,984.62	\$4,203.58	\$4,412.67	\$4,602.04	\$4,801.28	\$5,004.44	\$5,205.65
F17	\$21.77	\$22.98	\$24.26	\$25.46	\$26.55	\$27.70	\$28.87	\$30.03
Adv PPO	\$4,024.08	\$4,247.20	\$4,480.26	\$4,703.39	\$4,904.59	\$5,117.74	\$5,334.89	\$5,546.05
F18	\$23.22	\$24.50	\$25.85	\$27.13	\$28.29	\$29.52	\$30.77	\$32.00